

911 EAST ATLANTIC

MIXED-USED RESIDENTIAL PROJECT

911 EAST ATLANTIC BLVD, POMPANO BEACH, FL 33060



PROJECT NUMBER: 12622

AAC SUBMITTAL

03.05.2024

PROJECT TEAM

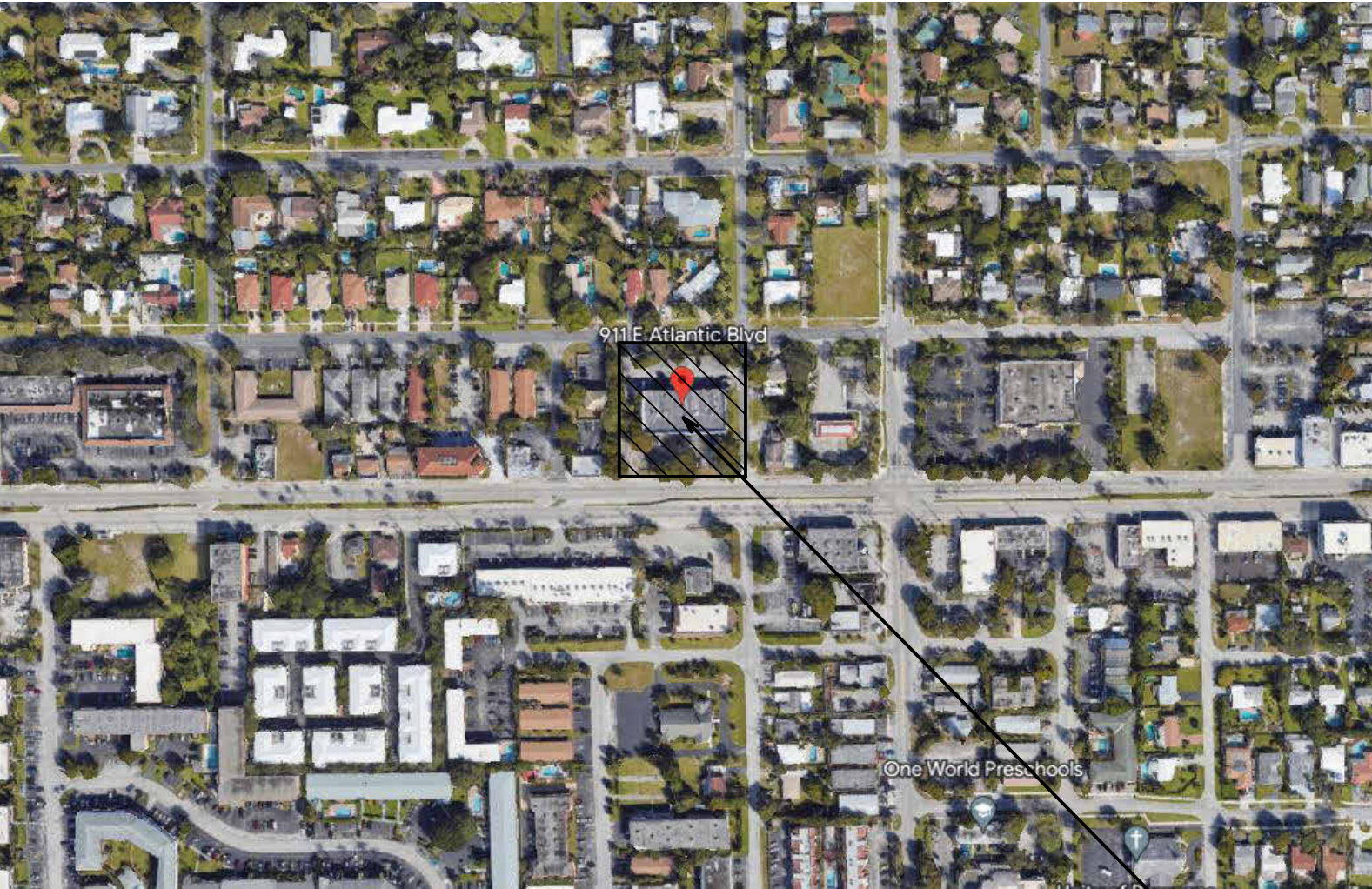
OWNER	JSA 911 POMPANO, LLC 433 PLAZA REAL SUITE 275 BOCA RATON, FL 33432 TEL: 973.476.1017
ARCHITECT	STEVEN L. COHEN AND ASSOCIATES 5295 TOWN CENTER RD SUITE 202 POMPANO BEACH, FL 33073 TEL: 954.971.1010
CIVIL ENGINEERING	KEITH 301 E ATLANTIC BLVD. POMPANO BEACH, FL 33060 TEL: 954.788.3400
LANDSCAPE ARCHITECT:	KEITH 301 E ATLANTIC BLVD. POMPANO BEACH, FL 33060 TEL: 954.788.3400

Sheet Index

Sheet Number		REVISIONS			
		REV 11.15.2023	REV 02.21.2024		
		Δ	Δ		
GENERAL					
S-1	EXISTING SURVEY				
P-1	EXISTING PLAT				
ARCHITECTURE					
A1.0	PROPOSED SITE PLAN	•	•		
A2.1	PROPOSED GROUND LEVEL PLAN	•	•		
A2.2	PROPOSED 2ND LEVEL PLAN		•		
A2.3	PROPOSED 3RD LEVEL PLAN	•			
A2.4	PROPOSED 4TH LEVEL PLAN	•	•		
A2.5	PROPOSED 5TH LEVEL PLAN	•			
A2.6	PROPOSED ROOF LEVEL PLAN		•		
A3.0	PROPOSED ELEVATIONS	•	•		
A3.1	PROPOSED ELEVATIONS	•	•		
A4.1	3D RENDERINGS		•		
PH-1	GROUND LEVEL PHOTOMETRICS				
PH-1A	GROUND LEVEL PHOTOMETRICS - EMERGENCY				
LANDSCAPE					
LD-101	LANDSCAPE DISPOSITION PLAN	•	•		
LP-001	PLANTING NOTES	•	•		
LP-101	PLANTING PLAN	•	•		
LP-201	SUSPENDED PAVEMENT PLAN	•	•		
LP-501	PLANTING DETAILS	•	•		
LI-101	IRRIGATION PLAN	•	•		
LI-501	IRRIGATION DETAILS	•	•		
LC-101	3RD & 4TH FLOORS AMENITY DECKS CONCEPT				
LC-102	ROOFTOP AMENITY DECK CONCEPT	•			
CIVIL					
GI-001	LEGEND AND ABBREVIATIONS				
GI-002	GENERAL CONSTRUCTION NOTES				
GI-003	CONSTRUCTION SPECIFICATIONS				
CD-101	DEMOLITION PLAN		•		
SP-102	OPTED PLAN		•		
SP-103	OPTED NOTES		•		
CG-101	EROSION CONTROL PLAN		•		
CG-501	EROSION CONTROL DETAILS				
CP-101	PAVING, GRADING, AND DRAINAGE PLAN		•		
CP-501	PAVING, GRADING, AND DRAINAGE DETAILS				
CP-502	PAVING, GRADING, AND DRAINAGE DETAILS				
CP-503	PAVING, GRADING, AND DRAINAGE DETAILS		•		
CU-101	WATER AND SEWER PLAN		•		
CU-501	WATER AND SEWER DETAILS				
CU-502	WATER AND SEWER DETAILS				
CU-503	WATER AND SEWER DETAILS				
CU-504	WATER AND SEWER DETAILS				
CU-505	WATER AND SEWER DETAILS				
CM-101	PAVING MARKING AND SIGNAGE PLAN		•		
CM-501	PAVING MARKING AND SIGNAGE DETAILS				
CM-502	PAVING MARKING AND SIGNAGE DETAILS				
LIFE SAFETY					
FA-101	FIRE CIRCULATION PLAN				

Project Description

NEW 5-STORY MIXED-USE DEVELOPMENT CONSISTING OF 9,107 SF OF RETAIL AREA AND 78 MULTI-FAMILY RESIDENTIAL UNITS (5 TOWNHOUSE STYLE UNITS & 73 APARTMENT UNITS) WITH ASSOCIATED AMENITIES ON THE THIRD & FOURTH LEVEL DECKS.



SITE LOCATION MAP

SCALE: N.T.S.



SITE

STEVEN L. COHEN

AND ASSOCIATES, P.A.

ARCHITECTS - INTERIOR DESIGNERS

5295 TOWN CENTER ROAD SUITE 202

FORT LAUDERDALE, FLORIDA 33486

PHONE (954) 971-1010

ARCH. REG. NO. 6819 CORP. NO. AA26001642

Digitally signed by Steven L. Cohen

Date: 2024.03.05 17:42:36 -05'00'